

# Master's Degree Programme in Biomedical Imaging

UTU Virtual Open Week 2024  
20 Nov 2024

Academy Research Fellow  
Kari Vienola

Education Coordinator  
Nina Vainikka

med-mdp@utu.fi or  
bima-office@bioimaging.fi

UTU Ambassador  
Mahnoor



**UNIVERSITY  
OF TURKU**



**Multidisciplinary.**

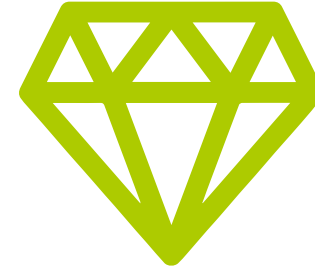
**International.**

**Research university.**

TURUN YLIOPISTO  
VAPAAKANSAN LAHJA  
VAPAALLE TIETEELLE

**The University of Turku is an active academic community of 25,000 students and employees which conducts groundbreaking and inter-disciplinary research. We engage in the development of Finnish and international education and innovations paving the way for a brighter future.**

> [utu.fi](https://utu.fi)



**The University  
of Turku is  
among the top  
1% in the world**

QS World University Rankings 2021

---

# 100

**Years in 2020**

**Founded in 1920  
by the initiative of  
the Finnish people  
with the support of  
22,040 donors.**

---

# 1<sup>st</sup>

**Finnish-  
language  
university**

**“From a free people  
to free science”**



**Academic  
heritage in  
Turku since  
1640**

**The first university in  
Finland, the Royal  
Academy of Turku,  
operated in the city  
1640–1828.**

# 8

Faculties



Faculty of Education  
Faculty of Humanities  
Faculty of Law  
Faculty of Medicine  
Faculty of Science  
Faculty of Social Sciences  
Faculty of Technology  
Turku School of Economics



# Effective research

We study digital learning environments and develop new ways of learning and teaching by utilising gamification and other novel methods.

We conduct research and work towards a better future and well-being. We promote free, effective and open science. **Our research is multidisciplinary and international aiming towards new, interdisciplinary initiatives.**

> [utu.fi/research](https://utu.fi/research)



**6,200**

**Scientific  
publications  
annually**

**Our research  
is profiled  
through six  
thematic areas**



**Biodiversity and sustainability**

**Future technologies and digital society**

**Cultural memory and societal change**

**Children, young people and learning**

**Health, diagnostics and drug  
development**

**Sea and maritime studies**



Turku, located in the Southwest Finland and founded in 1229, is the oldest city in Finland. Turku is compact in size, perfect for exploring the exciting mixture of old and new.

Turku offers the best quality of life with reasonable living costs, many housing options, active academic community, vivid cultural life, and a variety of outdoor activities.

- > [turku.fi/en/study-turku](http://turku.fi/en/study-turku)
- > [visitturku.fi/en](http://visitturku.fi/en)

40,000

Students in higher education





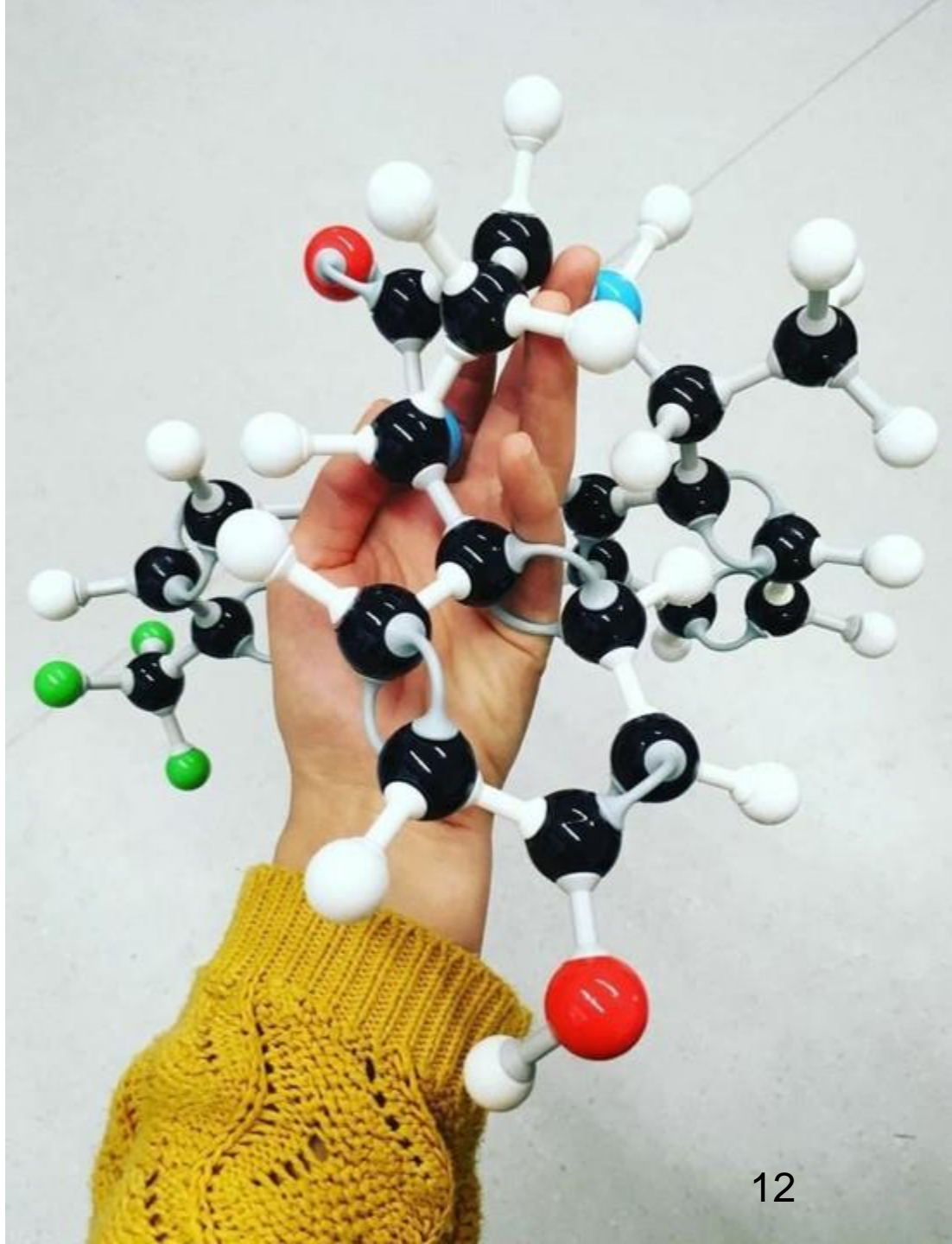


# Compact campus in the city centre

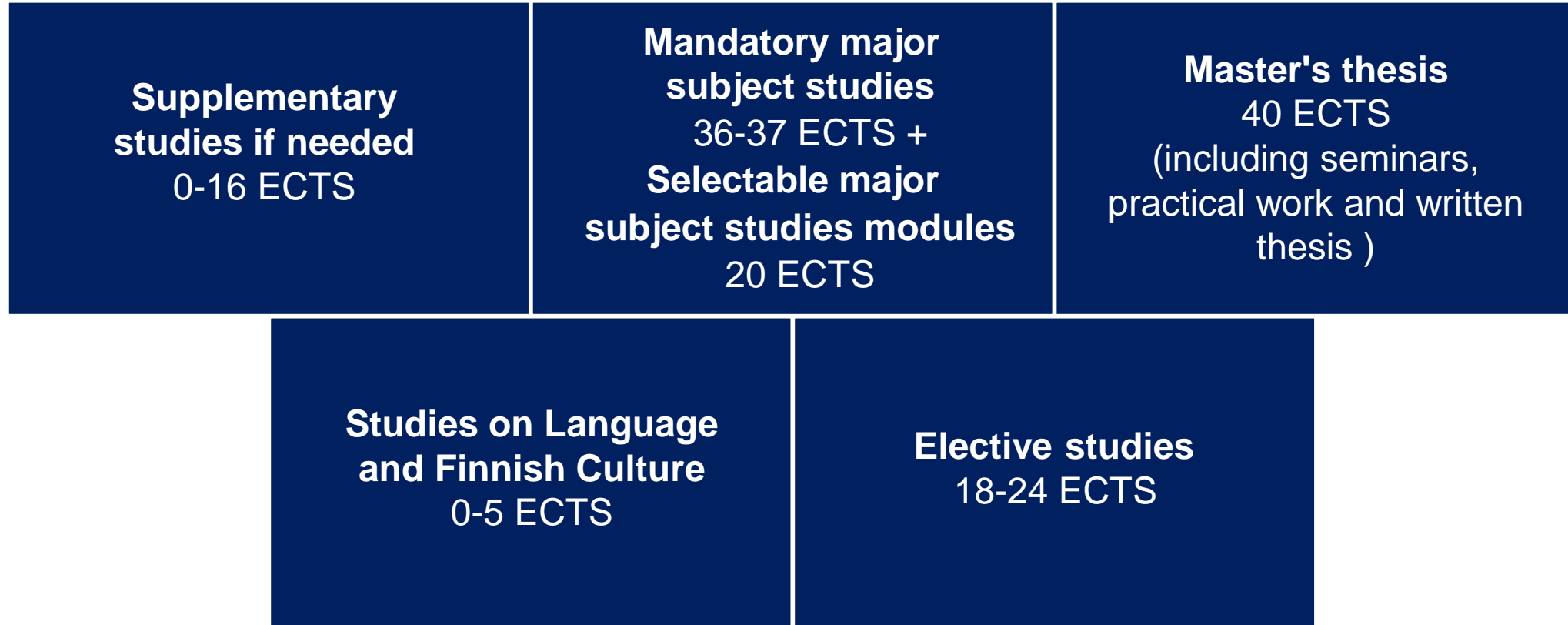
The Turku campus is located near the city centre and Aura River and close to other higher education institutions, businesses at Science Park, and the University Hospital. Also at Pori and Rauma, the campus is situated in the city centre.

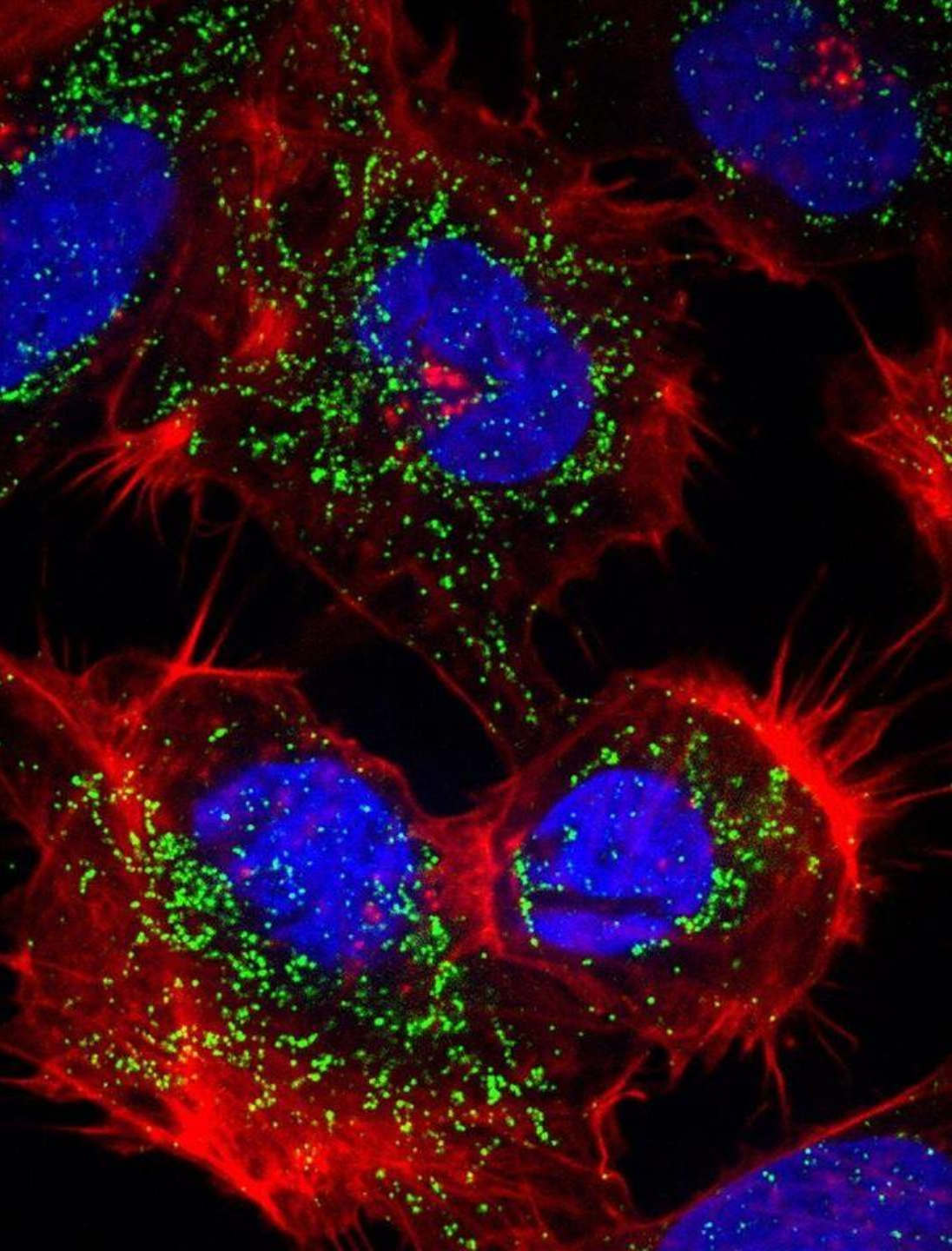
# Introducing Biomedical Imaging

**Biomedical Imaging**  
(in collaboration with Åbo  
Akademi University)



# Major structure of Master's Degree Programme in Biomedical Imaging (120 ECTS)





# Biomedical Imaging

One programme, two universities!

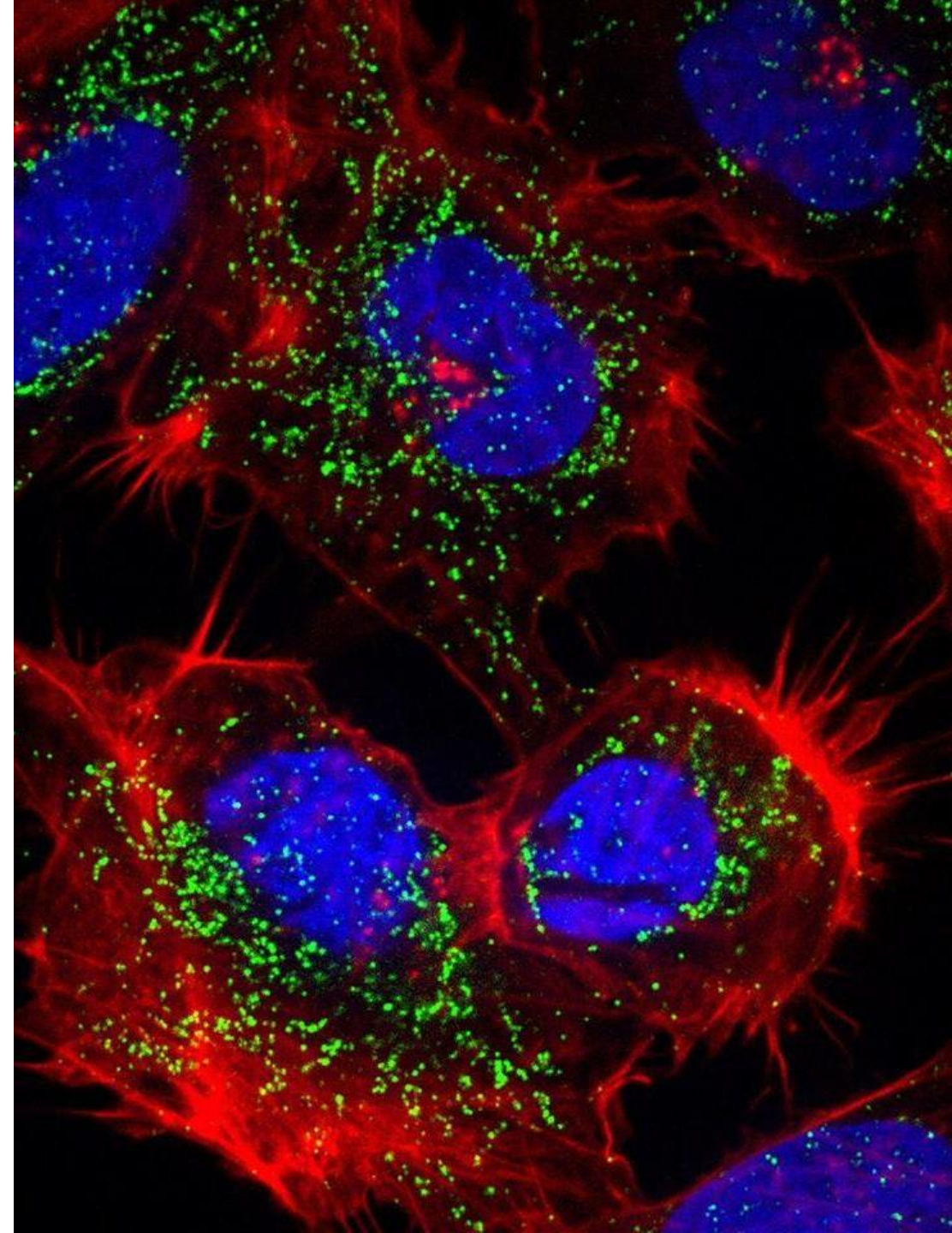
Based in the Institute of Biomedicine at the Faculty of Medicine/UTU and at the Faculty of Science and Engineering/ÅAU

The graduates have the possibility to continue their studies as doctoral candidates in order to pursue a career as a **scientist**, in industry or science **administration**, and in an **imaging core facility** or a hospital **research laboratory**.

Quota: 15 to UTU (ÅAU 20)

# Biomedical Imaging

- The interdisciplinary curriculum provides you with a broad spectrum of state-of-the-art knowledge in biomedical imaging related to many different areas in **cell biology, biophysics and biomedicine**.
- You will learn about different imaging modalities and modern imaging technologies
- Research facilities include a wide array of **state-of-the-art imaging technologies** ranging from atomic level molecular and cellular imaging to whole animal imaging, clinical imaging (e.g. PET) and **image analysis**.





Åbo Akademi  
University

# Åbo Akademi University

**100**  
YEARS  
IN 2018

Founded in 1918.

**4**  
FACULTIES

Arts, Psychology and Theology  
Science and Engineering  
Education and Welfare Studies  
Social Sciences, Business and  
Economics

**7,000**  
STUDENTS

Out of 7,000 students about  
1,000 are international  
students

**1**  
AND ONLY

The only multidisciplinary  
Swedish-language university  
in Finland



# Did you know - BIMA?



- Winner of the **2014 Nobel Prize** in Chemistry **Stefan Hell** did his original discoveries on STED microscopy at the University of Turku

- Finland hosts the Statutory Seat and coordinates from Turku the [Euro-BioImaging](#) infrastructure network which provides imaging services for European researchers



# Studying in the MDP's

Studying is fulltime and independent

Be active, question what you have learnt and take responsible of your studies and time management

Different learning methods are being used through the studies

Seminars, workshops and lectures

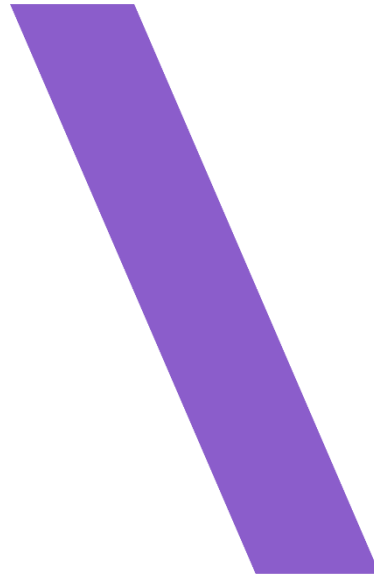
Projects, practice and group works

Written assignments for example reports, article/blog writing, learning journal

Oral presentations, podcasts, defending your own work



# Students



University of Turku is looking for academically inclined, motivated and independent students.

Students who are the best fit for our programmes.



**Welcome to**

**apply**

**8 – 22 January 2025**

> [utu.fi/degrees](https://utu.fi/degrees)

# Admission requirements

**A nationally recognized first cycle degree – typically a Bachelor’s degree – corresponding to at least 180 ECTS or to three years of full-time study**

**Excellent English language skills and a certificate that proves those skills in the required level**

> [utu.fi/en/study-at-utu/](https://utu.fi/en/study-at-utu/)

**Programme specific admission requirements**

**The degree on basis of which you are applying to the programme must be in a relevant field of study**

> See the programme pages at [utu.fi/degrees](https://utu.fi/degrees)

# Admission requirements – background studies to MDP in BIMA

## Relevant fields of background studies for applying for Biomedical Imaging

- biochemistry
- bioinformatics
- biology
- biomedical sciences
- chemistry
- computational biology
- engineering
- medical sciences
- pharmacology
- physics

Note that based on the background of the applicant, the admitted student may need to conduct 0-15 ECTS of **supplementary studies** if needed in the beginning of BIMA studies. The supplementary studies consists of the following areas:

- **cell biology**
- **biophysics**
- **laboratory skills or**
- **programming**

# Scholarship and tuition fees

- Tuition fees will be charged from citizens of a country outside the European Union (EU) and the European Economic Area (EEA) or Switzerland. **Tuition fee to Biomedical Imaging is €12,000/academic year**
- UTU offers a scholarship programme for students who are subjected to the tuition fees. The scholarship covers either 100% or 50% of the tuition fee.
- Please note that UTU scholarships do not cover living costs. Students need to cover all living expenses (at least 800 euros per month) from their own financial resources.
- Scholarship can be granted to up to 30 % of the admitted students who are subject to tuition fees and have applied for a scholarship. Number of scholarships changes annually.
- You can apply for a scholarship at the same time as applying for admission to one of our Master's degree programmes. The criteria for receiving the scholarship are the same as for admission in general.
- ÅAU is also offering scholarships. If you are considering applying to also ÅAU's Biomedical Imaging programme, visit [ÅAU's page](#) for more information about ÅAU's scholarships (e.g. number of scholarships):

> [utu.fi/en/study-at-utu/scholarships-and-tuition-fees](https://utu.fi/en/study-at-utu/scholarships-and-tuition-fees)



### **8 JANUARY 2025**

- Application time begins
- Prepare your application documents in advance!



### **22 JANUARY 2025**

- Application time ends (at 3 PM Finnish time)
- Check once more that all required enclosures are submitted and application is correctly filled!



### **3-14 MARCH APPLICATION INTERVIEWS**

- Invitations will be sent to selected students ~ couple of days / a week before the interview (EMAIL)
- Practise your interview in advance!



### **2 APRIL 2025**

- Admission results published and scholarships offered (EMAIL)
- Admitted students: Accept the study place and possible scholarship by the date and time given in the admission letter



# Planning on applying to Biomedical Imaging?

- Remember to apply to both **MDP in Biomedical Imaging at University of Turku** and **MDP in Biomedical Imaging at Åbo Akademi University** to increase your chances on being admitted!
  - The admission committee reserves the right to decide to which university the applicant will be admitted if the applicant has applied to Biomedical Imaging programme in both universities
- Read carefully the instructions on how to apply to multiple universities at the same time at **studyinfo.fi**
  - **Use the same joint application form in Studyinfo** instead of creating a multiple separate applications! Only most recent application form will be considered.
  - You can apply to maximum of 6 programmes at the same time in the joint application form (max 3 of these can be from the University of Turku)



# Tips on applying

- Read the instructions!
  - Check **How and when to apply** at [utu.fi/apply](https://utu.fi/apply)
  - Read carefully the instructions in the application form for programme-specific questions
- Know where you are applying to!
  - Get familiar with the programme and its admission criteria
- Learn to express your motivation!
  - Spend time writing your motivation letter well in advance!
  - Write the motivation letter in your own words – generic motivation letter does not show your individuality
- If you are invited to interview, practise your pre-assignment!
  - Check timing!



> [utu.fi/apply](https://utu.fi/apply)

# Student Life at the University of Turku

[blogit.utu.fi/studentlife/blog/](https://blogit.utu.fi/studentlife/blog/)



June 28, 2023 Burgert Maree

## The first few days in Turku – getting about and getting things done (map included!)

The first few days in Turku can be overwhelming, least not due to the lack of sleep you might have experienced in the process of getting here. Getting your apartment furnished, buying groceries (and not paying a fortune to do so), getting around, and knowing where to get medical care are the first few steps to getting settled in. Here, I have tried to provide



August 29, 2024 Asanka Pathirana

## Finding the perfect fit: my 7 reasons to study at the University of Turku

Originally from Sri Lanka, Asanka came to Finland in 2022 and stayed in Tampere and Helsinki before deciding to study at the University of Turku. What are her reasons to choose UTU?



December 28, 2021 Hilyatushalihah K. Audah

## Applying to UTU – Tips From a Current Student

Come study in Finland! Get inside tips on how to apply to the international degree programmes at UTU

[Subscribe to our Future with UTU newsletter!](#)  
> [utu.fi/en/study-at-utu/newsletter](https://utu.fi/en/study-at-utu/newsletter)



# UTUambassadors



Mahnoor – Master's student in Biomedical Imaging

> Chat with the UTUambassadors



#utuambassador  
@uniturku

# Master's Degree Programme in Biomedical Imaging

## Student Life



MSC IN BIOMEDICAL  
IMAGING

[> Turku Bioimaging](#)



### IVA RY

Student organization representing students from **biomedicine-related fields** (such as BIMA) in the Faculty of Medicine

<https://tyyala.utu.fi/iva/iva-in-english/>



**TURKU  
FINLAND**



# Career in Turku

> Read UTU alumni stories!



Dado has built an international career in biomedical imaging by not being afraid of the unknown

STUDY AND  
STAY in TURKU

> Inspire by Study and Stay in Turku career event materials!

# Q&A

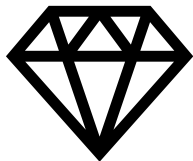


# Get ready to apply at Virtual Open Week!

30+ live sessions in 5 days!



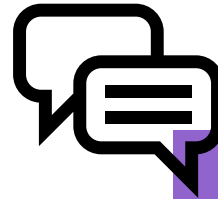
Get tips and  
guidance from  
admissions staff



Learn about available  
programmes from professors  
and study advisors



Gain insight from UTU  
alumni and current students



Chat with current students  
all week long



Recordings and presentations  
available until 6 December



[utu.fi/vow](https://utu.fi/vow)



UNIVERSITY  
OF TURKU



> [studyinturku.fi](http://studyinturku.fi)  
> [visitturku.fi/en](http://visitturku.fi/en)

Turku, located in the Southwest Finland and founded in 1229, is the oldest city in Finland.

# Welcome to the Student City of Turku

# 40,000

STUDENTS IN  
HIGHER  
EDUCATION





**UNIVERSITY  
OF TURKU**